



PAMELA G. LAWSON

NOV 6, 1946 - AUG 21, 2022



Scan to Visit

Table of Contents

Obituary	Page 3
Tribute Wall	Page 5
Media	Page 7



PAMELA G. LAWSON

NOV 6, 1946 - AUG 21, 2022

Pamela G. Lawson, aged 75, passed away on August 21, 2022 at Inova Loudoun Hospital. She was born in Washington DC to parents Edward F. McKnew and Gayle Osen. She is survived by her daughter Tanya L. Lawson and son-in-law Mark H. Sumimoto.

After graduating from McLean High School, Pam embarked on a 30+ year career with the US Intelligence Community. She maintained many long-standing friendships, and those who knew her had a friend who was loyal, thoughtful, good-hearted, and funny, with a sense of humor that bordered on bawdy.

She was an intrepid traveler and adventurer, and whether it was picnicking under a pink profusion of cherry blossoms in Tokyo, watching the city of Venice awaken at dawn, or trekking up the slopes of the ancient Acropolis, Pam knew how to experience life, to be mindful of every opportunity that comes our way.

She was a romantic and sentimentalist, thinking deeply of others, never forgetting a birthday, marveling at every new bloom in springtime, and valuing moments with friends and family, particularly her surviving siblings Edward F. “Mickey” McKnew (Karen), Barbara Griffin (Douglas), John Thomas “Tom” McKnew (Sandra), and Elizabeth Shimotani (Allen).

Pam knew certain truths in life: that White Christmas is the quintessential holiday movie, that pancakes are the ultimate breakfast food, wine is best when shared, and that kindness can change people’s lives.

She was never short on love and affection, especially for her daughter, to whom she helped foster an open mind, a charitable nature, and a compassionate soul.

Pam will be cremated and no public memorial services will be held, but condolences, stories, and pictures may be shared by those who knew and loved her at:



Obituary

PAMELA G. LAWSON

NOV 6, 1946 - AUG 21, 2022

<https://www.loudounfuneralchapel.com> courtesy of Loudoun Funeral Chapel. For those who wish to honor Pam, donations may be made in her name to Poplar Spring Animal Sanctuary in Poolesville, MD at: [Donate | Poplar Spring Animal Sanctuary](#).



Tribute Wall

PAMELA G. LAWSON

NOV 6, 1946 - AUG 21, 2022

SW

Sue Weis posted:

Missing my good friend. I knew Pam when she drove a 1960s red mustang convertible! Our paths separated only to bring us together later in life. Missing her smile, laughter and sense of humor. She was a kind thoughtful person and I was so blessed to have her as a friend. She is dearly missed.

September 14 at 4:58 PM

SW

Sue Weis lit a candle in honor of PAMELA.



September 14 at 4:53 PM

DL

Donna Lac sent a virtual gift in honor of PAMELA.



September 5 at 6:11 PM

DL

Donna Lac lit a candle in honor of PAMELA.



September 5 at 6:05 PM



Barbara Griffin shared 2 photos to the **Tribute Wall** album.

Sister Pam was 16 months older than me, was a kind, thoughtful, generous person and will always be in my heart. In 1977, I moved to Alaska and we became not so close geographically. Over the years, we consistently texted, spoke on the phone, and eventually shared a wonderful QE2 cruise in 2017.



August 29 at 4:01 PM



Tribute Wall

PAMELA G. LAWSON

NOV 6, 1946 - AUG 21, 2022

AS

Alan Swendiman posted:

In memory of a loving, caring, tender, thoughtful, sensitive, humble, loyal, supportive, sentimental and playful woman who will be missed terribly. May you be in God's loving embrace.
Alan

August 28 at 8:59 AM

AS

Alan Swendiman lit a candle in honor of PAMELA.



August 27 at 4:44 PM

DF

Denise Francis lit a candle in honor of PAMELA.



August 27 at 1:37 PM



Media

PAMELA G. LAWSON

NOV 6, 1946 - AUG 21, 2022



Barbara Griffin shared 2 photos to the **Tribute Wall** album.

August 29 at 4:01 PM



Barbara Griffin August 29 at 8:02 PM

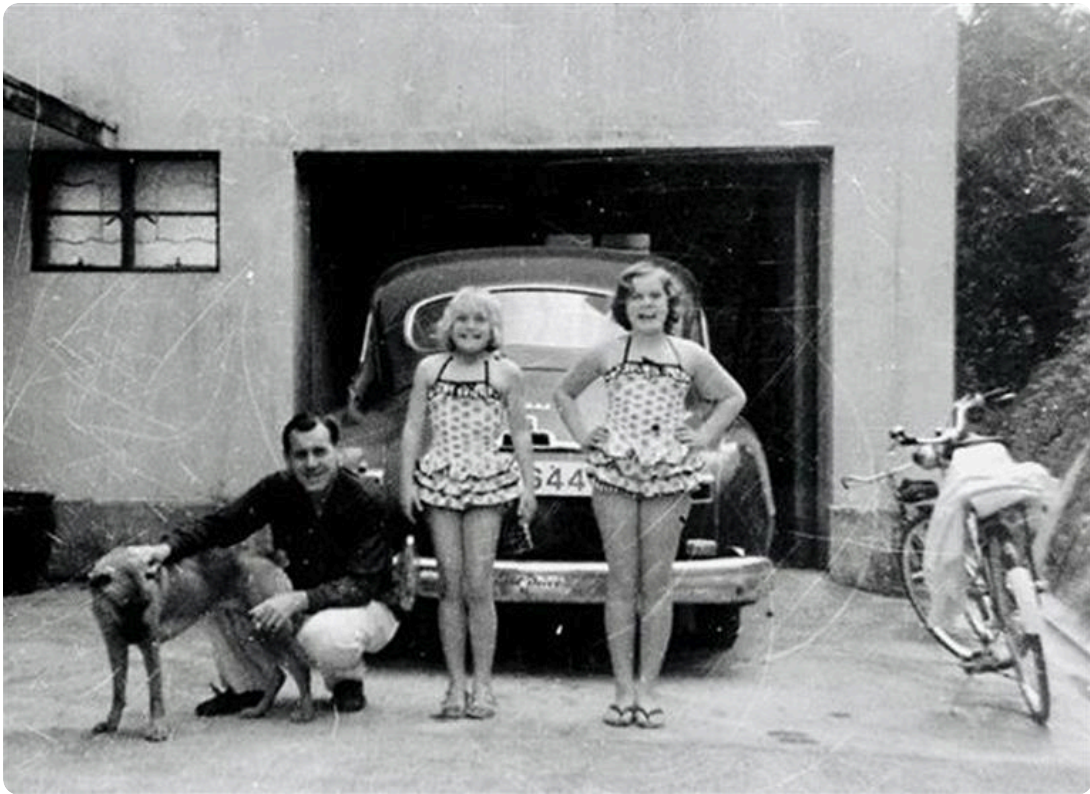
Early 1950's, Kensington, Maryland



Media

PAMELA G. LAWSON

NOV 6, 1946 - AUG 21, 2022



Barbara Griffin August 29 at 8:02 PM
Hong Kong, mid 1950's.



Memories only last if you share them

Join us in honoring PAMELA by contributing to a collection of shared memories.



Scan to Visit